

PIX-LINK

Quick Installation Guide

Wireless-AC Dual Band
1200Mbps Repeater/AP



Applicable Model:LV-AC09

LED Explanation

Signal
(Repeater Mode)

- The AC MiNi Router is connected to the router or AP, but is too far away from the router or AP.
- The AC MiNi Router is connected to the router or AP, and is in a good location.
- The AC MiNi Router is connected to the router or AP, but is too far near from the router or AP.

Button Explanation

WPS Button: If your host router supports WPS function, you can press the WPS button and then press the WPS button of the AC Repeater to establish a secure connection between the host router and the AC Repeater.

Reset Button: This button is used to restore the AC Repeater' s factory default settings.

LAN/WAN Port: One 10/100/1000Mbps RJ45 Ethernet port.

- Repeater mode, it' s used to add wireless connectivity to an Ethernet-enabled device such as Internet TV,DVR, Gaming console and so on.Please note that this port is not allowed to be connected with router.
- Access Point mode, it ' s used for connecting to front router or Internet.

Quick setup using a web browser

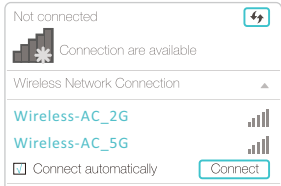
1 Power on

Plug the AC Repeater into an electrical outlet near your router. When the router boot completed, the Signal LED all on.



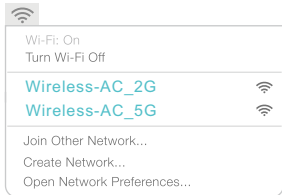
2 Connect to the AC Repeater

For Windows Users



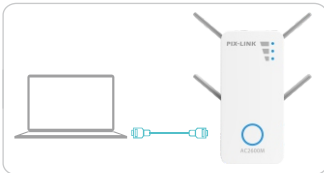
Disconnect your Ethernet (wired) connection from your computer. Click the Wi-Fi icon on the taskbar and connect to the Repeater's network (e.g. [Wireless-AC_2G/5G](#)).

For Mac OS X Users



Disconnect the Ethernet (wired) connection from your computer (if any). Click the Wi-Fi icon in the top right corner of the screen, and connect to the Repeater's network (e.g. [Wireless-AC_2G/5G](#)).

For Wired



Disable the Wi-Fi on your computer. Connect your computer to the Repeater via an Ethernet cable.

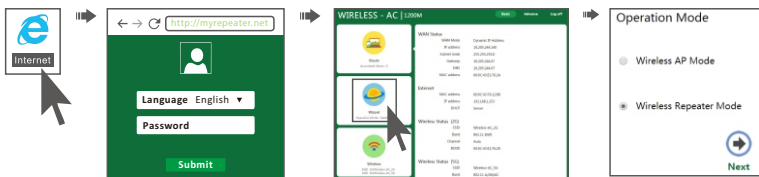
3 Configure the AC Repeater

1.Open a web-browser and type <http://myrepeater.net> in the address field. After a moment, a login window will appear. Select the language for the installation, and then enter admin for the Password, Then click the Submit button or press the Enter key to log in.

Language - Select the Language from the drop-down list. The default setting is [English](#).

Password - Enter the password for Login. The default password is [admin](#).

2.After successful log in, you can click the Wizard to quickly configure your router. Select the Operation Mode you need and click Next go on configuring.



• Wireless Repeater Mode

Extend wireless signal comprehensively:This router can connect to uplink wireless router by wireless connection,user terminal can connect to this router by wired or wireless connection.

If [Wireless Repeater Mode](#) is selected,The Wireless Repeater(WDS) page will appear as shown below.



Wireless Repeater(WDS)				
Channel	SSID	Signal	Security type	Select
36	Lavid_5G		WPA2PSK	Select
44	5G		NONE	Select
36	NETGEAR07-5G		WPA2PSK	Select
11	Wii-Repeater		NONE	Select
11	TP-RICKY		WPA1PSK/WPA2PSK	Select

Connect to

Lavid_5G

Repeater ssid (2G)

Lavid_5G_2G_Ext

Repeater ssid (5G)

Lavid_5G_5G_Ext

Security

Back

Apply

Refresh

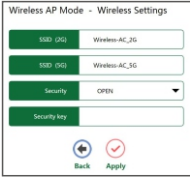
Select the SSID of the target network and insert Repeater SSID and the key of your network. the default Repeater SSID is set to be [xxxx_2G_Ext](#) / [xxxx_5G_Ext](#) (xxxx indicates The Main Router's wireless network name). Then click Apply to complete setup.

Note: The Security Key is the same as your Wireless Router.

• Wireless AP Mode

Raditional wired router realize wireless function:This router can connect to uplink router's LAN port by wired connection,user terminal can connect to this router by wireless connection.

If **Wireless AP Mode** is selected,The Wireless settings page will appear as shown below.



SSID(2G)/SSID(5G) - Enter a value of up to 32 characters. The same name of SSID (Service Set Identification) must be assigned to all wireless devices in your network. The default SSID is set to be **Wireless-AC_2G** and **Wireless-AC_5G**.
Security - you can choose the security type on the drop-down list. The default setting is **OPEN**.
Security key - Wireless Password, When **WPA/WPA2PSK** is set as the Security Type, You can enter ASCII characters between 8 and 63 characters or 8 to 64 Hexadecimal characters.

Enter SSID and Security,then click Apply to complete setup.

Quick setup Repeater Mode using WPS Button

WPS is an easier way to extend your host network. You are recommended to use this method if your host router has a WPS button.

Note: your host router should support WPS.

The button might look like one of these:  |  . Otherwise, please setup Using a Web Browser.

1 Power on

Plug the AC Repeater into an electrical outlet near your router. When the router boot completed, the Signal LED all on.



2 Connect

Press the WPS button on the AC Repeater, and then press the WPS button on your Host Router within 2 minutes.



The WPS LED will be blink when press the WPS button, the xxxx_2G_Ext / xxxx_5G_Ext appear in your wireless network list,indicating a successful WPS connection,(xxxx indicates The Host Router's wireless network name).If not, please use Web Browser setup.

Note: The Security Key is the same as your Host Router.

The WPS first connect to the 5GHz network, if you want connect to the 2.4GHz network of your dual-band router, please use Web Browser setup.

Relocate

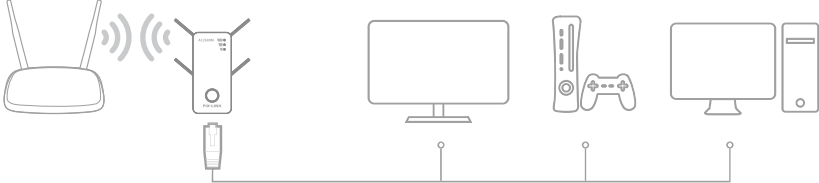
1.Plug the extender into an electrical outlet about halfway between your router and the Wi-Fi dead zone. The location you choose must be within the range of your host network.



2.Wait until the signal LED is display two or three lattice signals. If not, relocate it closer to the router to achieve better signal quality.

Entertaubment Adapter

The AC Repeater can be used as a wireless adapter to connect any Ethernet-only device such as a Blu-ray player, game console, DVR, or smart TV to your Wi-Fi network. First, connect the AC Repeater to your router using Repeater Mode or WISP Mode. Then connect your Ethernet-only device to the Repeater via an Ethernet cable.



Change Default Access

Default Access of The AC Repeater is <http://myrepeater.net>, and Default IP Address of The AC Repeater is 192.168.1.253. Click “Advance -> Internet-> LAN Settings ” located at the home page,the following message will be displayed on your web browser.

LAN interface setup

MAC address00-0C-43-76-12-88

IP address192.168.1.253

Subnet mask255.255.255.0

Domainsmywifi.net

Apply

Click Apply to save the settings.

Note: If you change the IP Address of LAN or Domains, you must use the new IP Address or Domains to log in the router.

Firmware Upgrade

The system software used by this AC Repeater is called “**firmware**” , just like any applications on your computer, when you replace the old application with a new one, your computer will be equipped with new function. You can also use this firmware upgrade function to add new functions to your router, even fix the bugs of this router.

1)Click “Advance -> System -> Upgrade Firmware ” located at the home page, the following message will be displayed on your web browser.

Firmware upgrade

Select Upgrade firmware, then click "Upload" button to upgrade:

Brower

Upload

Current firmware version : AC1200.MR.4320.20160924

2)Click “Browse” button first; you'll be prompted to provide the filename of firmware upgrade file.
3)After a firmware upgrade file is selected, click “Upload” button. and the AC Repeater will start firmware upgrade procedure automatically. The procedure may take several minutes, please be patient.

Frequently Asked Questions (FAQ)

Q1. What should I do if I cannot access the Repeater's web management page?

- If your computer is wirelessly connected, make sure that you have connected to the Repeater's SSID.
- If your computer is connected via an Ethernet cable, please make sure that the connection is stable.
- Make sure your computer is set to obtain an IP address and DNS server address automatically.
- Verify that <http://myrepeater.net> or <http://192.168.1.253> is correctly entered in the web browser and press Enter.

• Please reset the Repeater and try again.

Q2. I have enabled a wireless MAC filter, wireless access control, or access control list(ACL) on my host router. What should I do before configuring and using the extender?

- If you have enabled those functions of your host router, you may need to disable them first. And then follow quick setup to complete the configuration.